



BHANSALI PRECISION

Your Partner In Machining



TURNING - MILLING

DREHEN - FRÄSEN

DRAWING PARTS - FASTENERS

STAINLESS STEEL - EDELSTAHL



BHANSALI PRECISION

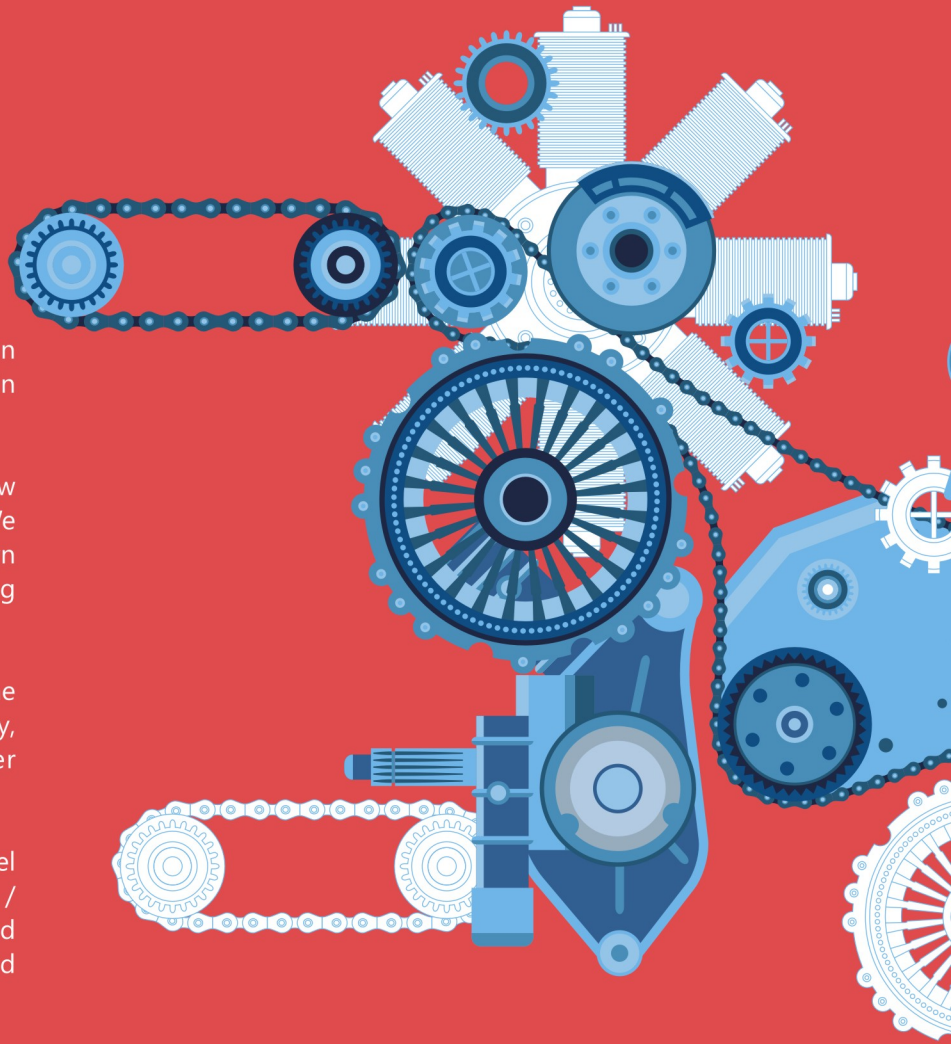
Bhansali is your partner for Machining.

We are a specialized manufacturer of Precision Machined Components and Turned Fasteners in Stainless Steel.

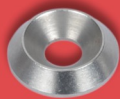
Our strength lies in our 40 years of know-how and expertise in Stainless Steel Materials. We use high quality raw materials from our own plant of Stainless Steel Bars for manufacturing Components.

Our products are well accepted all around the world. Our products are shipped to Germany, Sweden, Denmark, Switzerland and other European countries.

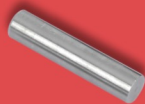
We produce in various grades of Stainless Steel such as 304L / 316L / 303 / 410 / 431 / 430F / 2205 Duplex and other special stainless and nickel alloys complying with European and



Break Nut / Shear Nut



Cup Washer



Pin



Hex Plug



Double Ended Stud



Coupling Nut



Castle Nut



Dome Nut



Adjusting Ring



Knurled Nut

Turned Fasteners



CNC Turned / Milled Parts

Process

Bhansali Precision has complete machining capabilities along with surface finishing. Turning and Milling is at the heart of our business.



Turning



Milling

Turning

Milling

Grinding

Threading

Plating

Polishing

Drilling

Tapping

Honing

Boring

Slotting

Heat Treatment

Machinery

Our machine park is equipped with Precision CNC Lathes and VMC Milling along with finishing machines. We also have special purpose machines adapted for large series production.



CNC Turning Centre



VMC Milling Centre

CNC Turning Centre

VMC Milling Centre

Swiss CNC Turning

Single Spindle Automats

Lathe

Milling

Centreless Grinding

Thread Rolling

Polygon Turning

Drilling Machine

Tapping Machine

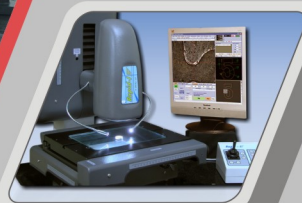
Ultrasonic Cleaning

Inspection

Our inspection instruments are capable of measuring the most complex parts with high precision. We also use customise gauges for high volume inspection and quality control.



Co-ordinate Measuring (CMM)



Co-ordinate
Measuring (CMM)

Vision Measuring
System (VMS)

Height Master

Surface Roughness Tester

PMI - Metal Testing

Hardness Tester

Vernier Caliper

Micrometer

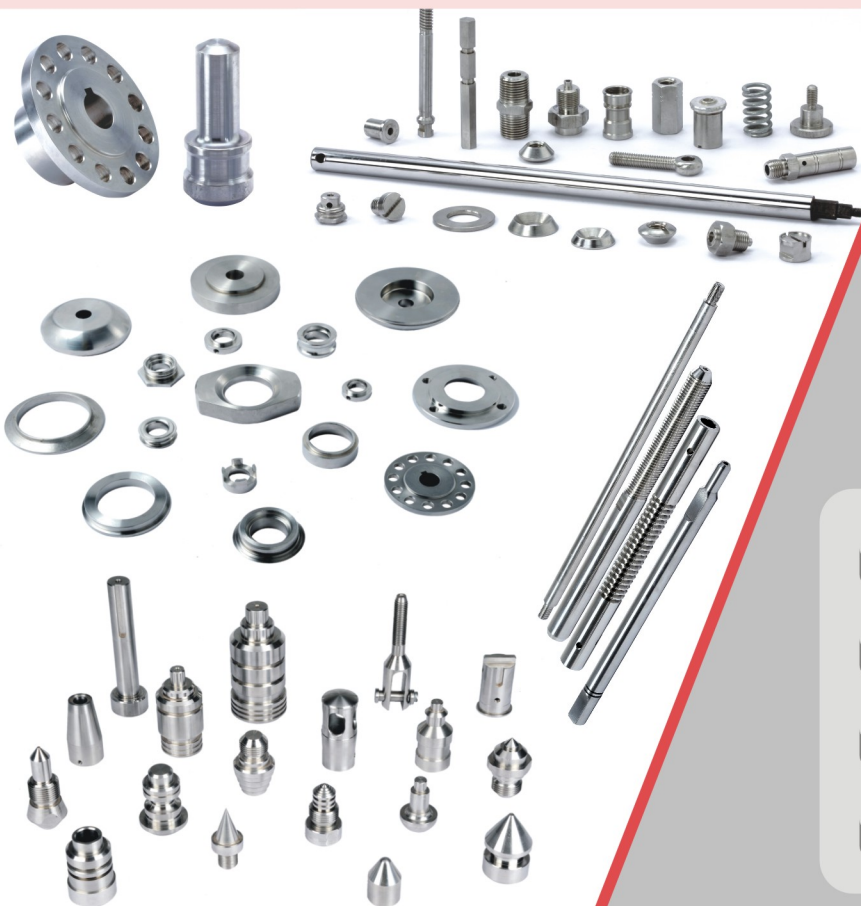
Plug Gauges

Slip Gauges

Ring Gauges

D-Meter

Precision Machined Components as per Drawing



Materials :
Specialized in Stainless Steel - 303 / 304L / 316L / 410 / 431/ 430F / 416 / Duplex
Alloy Steel and Free cutting Steel
Nickel Alloys, Inconel, Monel, Hastelloy
Aluminium, Copper, Brass

Standard : DIN, BS, EN, IS, ASTM, AMS, JIS
and other International Standards

Size : Dia 2mm to 200mm
Length : 3mm to 2000mm
Finish : Polished, Ground, Honed, Burnished
Plating : Zinc, Chrome, Nickel

Product Specification :

Valve Spindles

Pump Shafts

Nozzles

Tie Rods

Threaded Rods

Honed Tubes

Piston Rods

Handles

Connectors

Rope Fittings

Hose Fittings

Couplings

Application Industries



Automobiles Industries



Aircraft Industries



Medical & Dental Industries



Machine Building Industries

Electronics Industries

Valves Industries

Pumps Industries

Defense Products

ISO Certificate from TUV



Stainless Steel

We Specialize in Stainless Steel (Edelstahl)
- Precision Machined Components
- Special Turned Fasteners

Special Turned Fasteners



We manufacture
Machined Cup Washers as per
NFE 27-619
& Finishing Washers 90°

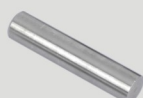
Materials :

Stainless Steel
A1-303, A2-304, A4-316,
Steel and Aluminum.

Size :

M2.5, M3, M4, M5, M6,
M8, M10, M12

Cup Washers



We manufacture
Parallel Pins as per DIN 7 &
Dowel Pins, Locking Pins for
clamps

Materials :

Stainless Steel
A2-304, A4-316

Diameter : 6 mm to 30 mm

Length : 10 mm to 200 mm

Tolerance : m6, h9

Pins



We specialize in manufacturing of
Shear Nuts in Stainless Steel.
These are also called Break Nuts
or Safety Nuts. It is used in
security applications.

Materials :

Stainless Steel
A2-304, A4-316

Size :

M6, M8, M10,
M12, M14, M16

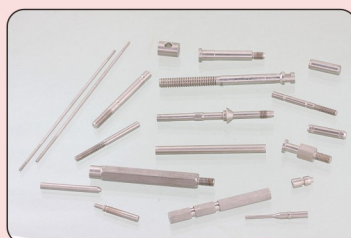
Shear Nuts

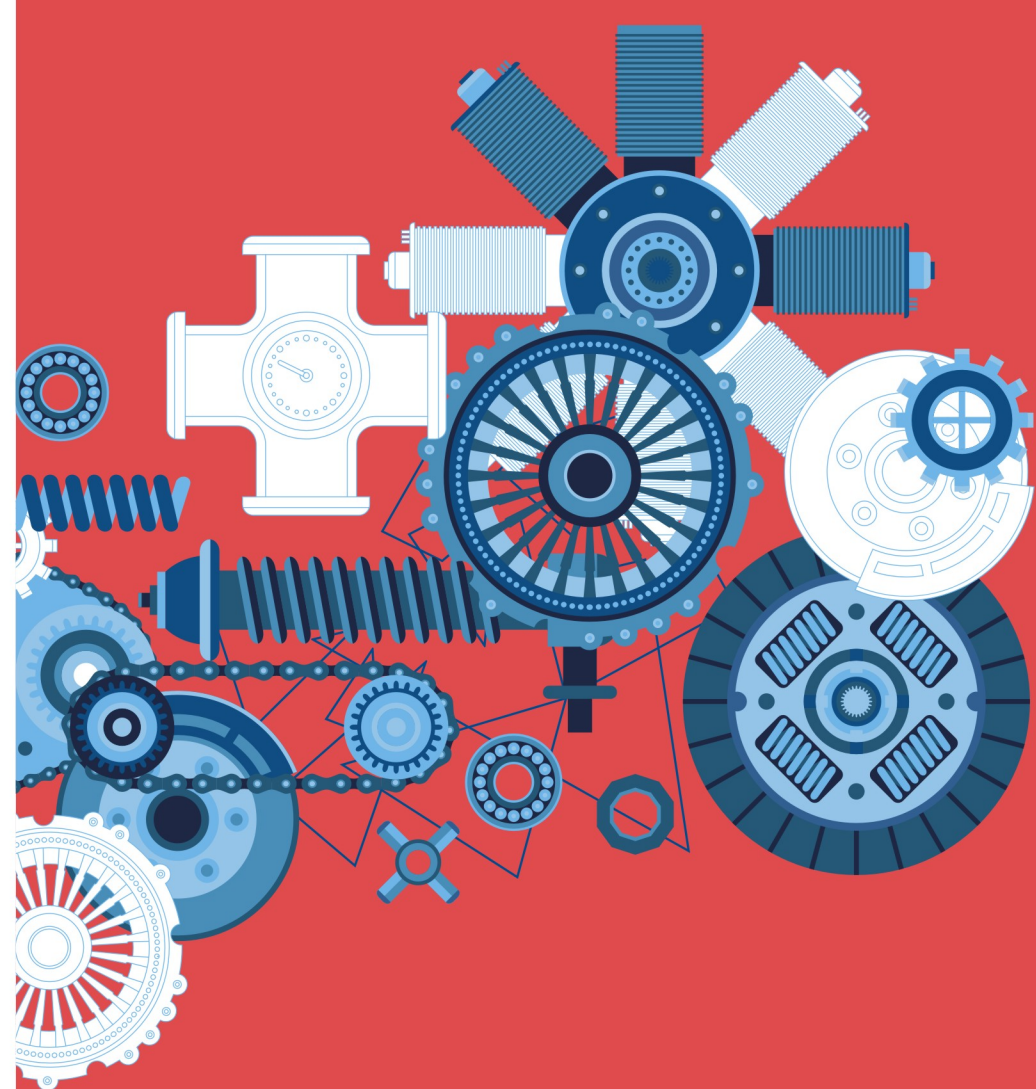
DIN Standards

| Image | Description | DIN |
|-------|---|-----|
| | Parallel Pins | 7 |
| | Knurled Thumb Screws, High Type | 464 |
| | Slotted Knurled Thumb Screws, High Type | 465 |
| | Knurled thumb nuts, High Type | 466 |
| | Knurled thumb nuts, Low Type | 467 |
| | Slotted Round Nuts | 546 |
| | Round nuts with Drilled Holes in one face | 547 |
| | Knurled thumb screws, Low Type | 653 |
| | Adjusting Rings, with and without set screws | 705 |
| | Studs, threaded end = 2d | 835 |
| | Hexagon Socket pipe plugs, conical thread | 906 |
| | Hexagon socket screws plugs with cylindrical thread | 908 |
| | Hexagon head screw plugs with cylindrical thread | 910 |
| | Hexagon slotted and castle nuts | 935 |
| | Hexagon thin slotted & half castle nut | 937 |

DIN Standards

| Image | Description | DIN |
|-------|--|-------|
| | Studs, Threaded end = 1xd | 938 |
| | Studs, Threaded end = 1.25xd | 939 |
| | Threaded Rods | 976-1 |
| | Threaded Rods, type B | 976-1 |
| | Dome Nuts | 986 |
| | Heavy Dome Nuts | 1587 |
| | Hexagon nuts for bolts with reduced shanks | 2510 |
| | Spherical washers, Type C Conical Washers, Type D | 6319 |
| | Hexagon nuts 1.5 d type B | 6330 |
| | Long Hexagon nuts | 6334 |
| | Finishing washers for 90° / Cup Washers | |
| | Round Coupling nuts | |
| | Hexagon Coupling nuts | |
| | Shear off nuts / Break nuts | |
| | Turnbuckles | |





BHANSALI PRECISION

Manufacturer & Exporters of
Precision Machined Components & Turned Fasteners

Head Office : Madhav Bhavan, 150 Nanubhai Desai Road, Mumbai - 400 004 (India)

Tel.: +91-22-2386 5178 • 2388 2320 • Mobile : +91-98210 65002

E : sales@bhansaliprecision.com • W : www.bhansaliprecision.com

Our Group Company

BHANSALI INC

Manufacturer & Exporters of Stainless Steel Bright Bars, Hex, Square & Threaded Bars
www.bhansaliinc.com